



It started with a quick meeting on a worksite. Chris, the Wellington manager of CS for Doors, had stopped in to measure up a cavity slider for the Johnsonville house that Scott and his Mitchbuild® team were building...

It was the architect's own private home and his plans specified a customised CS Cavity slider. Doing the onsite measure gave Chris a chance to watch Mitchbuild® in action.

He was clearly impressed by the quality of their work, professionalism and eye for detail. Less than a year later, Chris invited Mitchbuild® to tender for the company's new Wellington showroom and office.

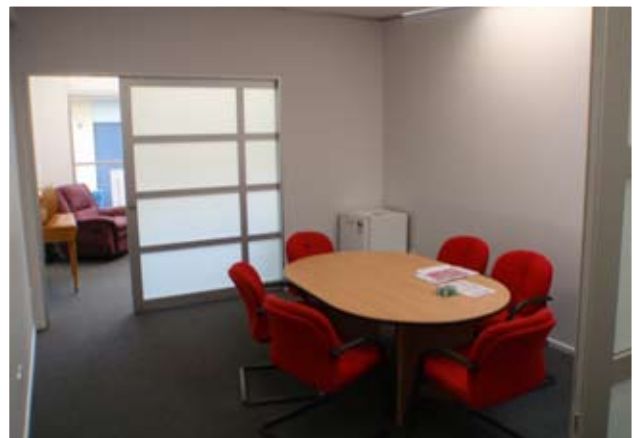
This was a sizeable job. It required building a totally new showroom with suspended ceiling, installing eight cavity sliders (including two automatic doors and a double commercial aluminium-framed slider), remodelling the kitchen, building the boardroom



and manager's office, and installing a new lighting system. The new premises then needed to be carpeted and painted.

All of this had to be done within one month. With their lease ending, CS for Doors had to be out of their existing offices by the end of February. **This was one deadline which was absolutely non-negotiable.** After developing a detailed work plan and schedule, Scott was confident Mitchbuild® could deliver and their tender was quickly accepted.

Even though a delay in the building consent process meant that the lining, gibbing, plastering and carpeting could not start until the final week, **Mitchbuild®'s qualified builders and trusted sub-contractors worked in the evenings to get the job completed to the highest standards and on time.**



Chris says he cannot speak highly enough of Mitchbuild® and their work.

continued next page...

“ Our job put the Mitchbuild® guys under pressure but they came through for us. It is amazing what they achieved in 30 days”

The new showroom is modern and stylish - great for showing clients our diverse product range. **Mitchbuild® created the perfect environment for us** to show people just how good our cavity sliders are,” he said.

Mitchbuild® already had experience with CS for Doors cavity sliders. “Most people in the industry know the quality of the CS products. It’s definitely our preferred system. We use CS doors in commercial shop fit-outs, residential builds and renovations. The biggest that we have installed was just this year – a 2.4 metre high, 4 metre wide four-door stacker. It was huge! It meant a lot when we got the tender to build their new showroom and office. I believe we have built up a very successful working relationship,” Scott explained.

“ From the CS for Doors perspective, we look forward to working with Mitchbuild® for many years to come”



CS for Doors: www.cavitysliders.co.nz and www.csfordoors.co.nz